

Dimensions for Models:

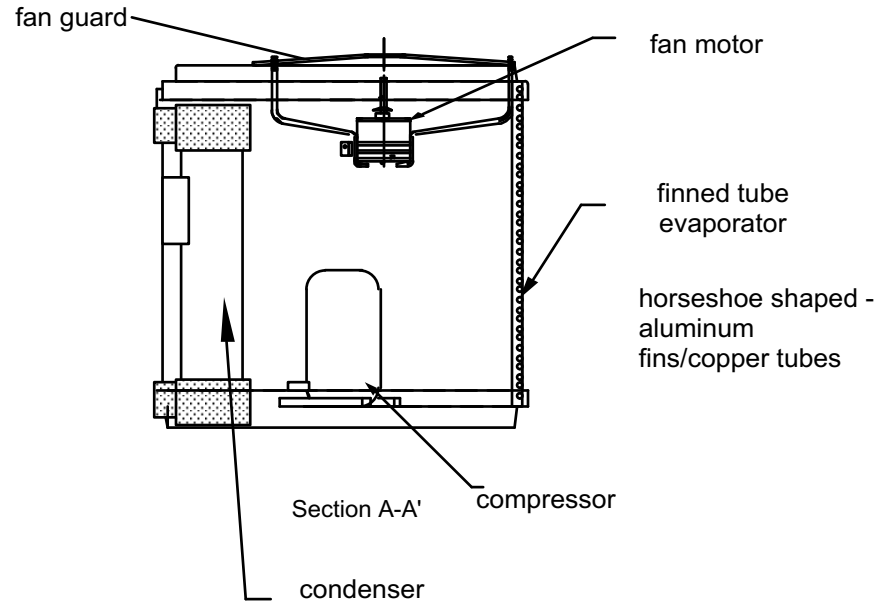
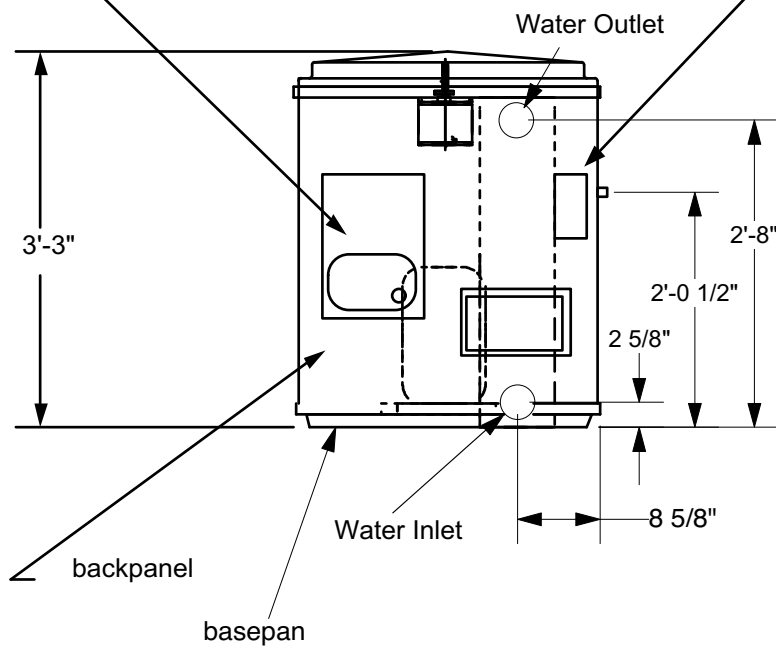
R410A 2010 & newer:

Heating Only all C3.25HP, Z375HP, C5HP, Z575HP models including
suffixes -HP3,-HPX,-HP50,

Cooling Only - Z575CP , Z575CP3, Z575CP4, Z575CPX

R22 pre 2010 models:

3.25HP, SX3.25HP, 5HP, SX5HP ONLY



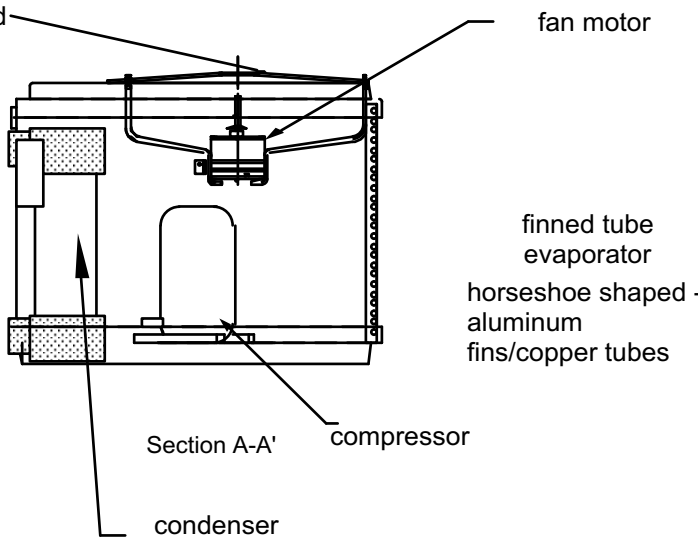
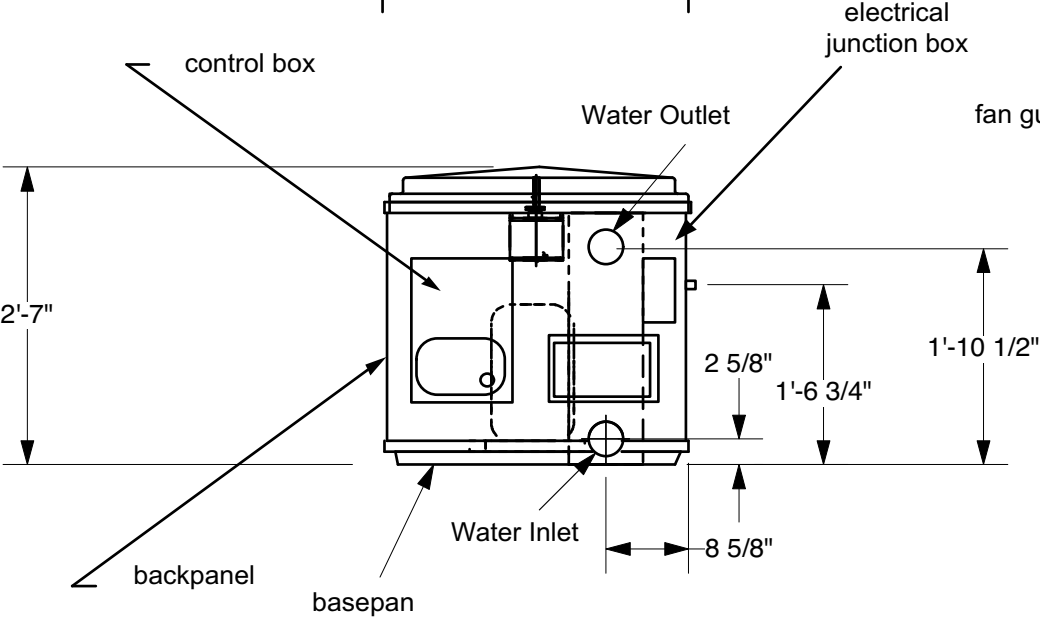
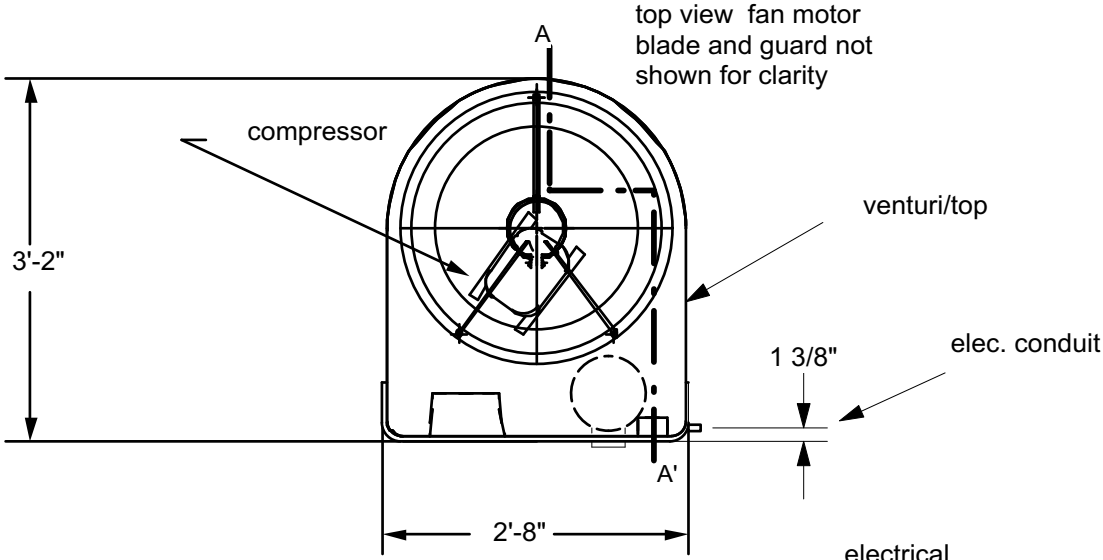
BOTH WATER INLET & OUTLET are Sch 40 PVC
1.5" Slip Fitting (ID)
2" MPT (OD)

| | | | |
|---|------------|----------------|----------------|
| United States ThermoAmp Inc. 1223 Walnut Street • Latrobe, Pennsylvania, USA 15650 • 724-537-3500 | | SHEET | Rev. |
| | | 1 of 3 | D |
| TITLE | DRAWN BY | DRAWING NUMBER | DATE |
| <i>UNIT LAYOUT 3/5HP</i> | <i>WPB</i> | <i>061102</i> | <i>11/8/10</i> |

Dimensions for Models given are for the following models only:

R410A 2010 & newer:
 Heating Only - C200HP, Z200HPC, 2.25HP, C2.25HP, Z250HP models including suffixes -HP3,-HPX,-HP50

R22 pre 2010 models: 2.25HP & 2.25HPX only



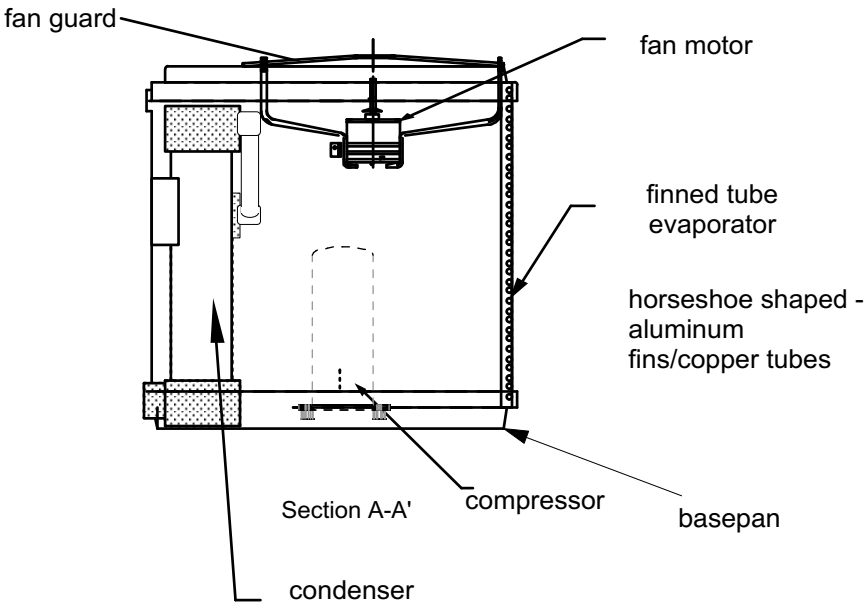
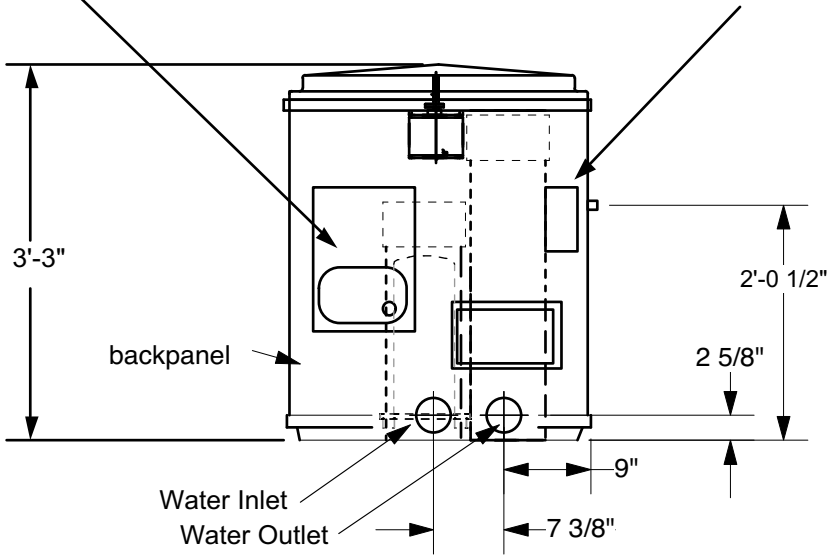
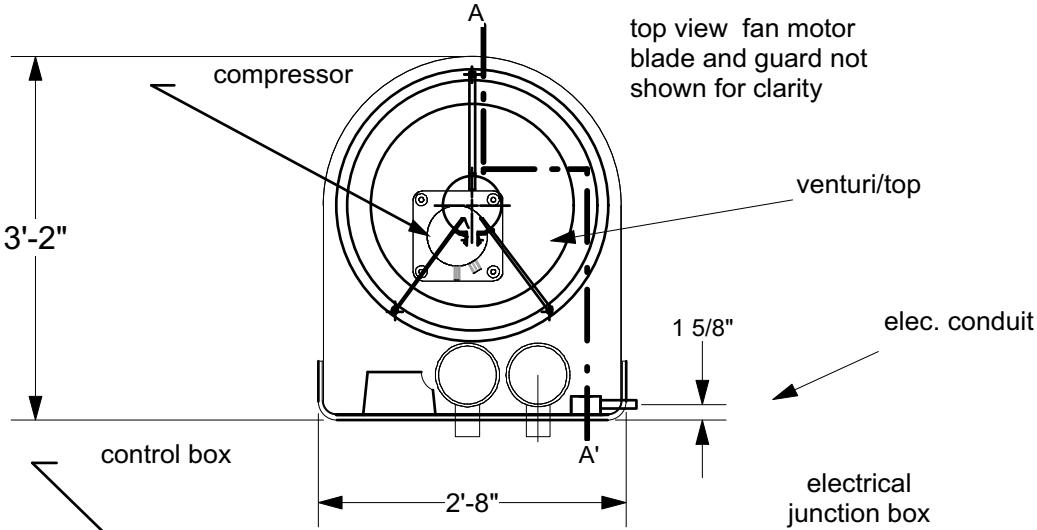
BOTH WATER INLET & OUTLET are Sch 40 PVC
 1.5" Slip Fitting (ID)
 2" MPT (OD)

| | | | |
|---|------------|----------------|----------------|
| United States ThermoAmp Inc. 1223 Walnut Street • Latrobe, Pennsylvania, USA 15650 • 724-537-3500 | | SHEET | Rev. |
| | | 2 of 2 | E |
| TITLE | DRAWN BY | DRAWING NUMBER | DATE |
| <i>UNIT LAYOUT 2HP</i> | <i>WPB</i> | 061102 | <i>1-31-17</i> |

Dimensions for Following R410A Models (2010 & newer):

Heating Only - Z700HP, Z700HP3, Z700HPX, Z700HP4,

Reversing (HC) Models - Z575HC, Z575HC3, Z575HCX



BOTH WATER INLET & OUTLET are Sch 40 PVC
1.5" Slip Fitting (ID)
2" MPT (OD)

| | | | |
|---|------------------------|---------------------------------|-------------------------|
| United States ThermoAmp Inc. 1223 Walnut Street • Latrobe, Pennsylvania, USA 15650 • 724-537-3500 | | SHEET 3 of 3 | Rev. E |
| TITLE UNIT LAYOUT 7HP/5HC | DRAWN BY WPB | DRAWING NUMBER 061102 | DATE 12-15-14 |